

History

NWEC was established in July 1977 as an institution affiliated to the Ministry of Education. Numerous women's organizations and researchers supported the opening of NWEC.

1977	Establishment of NWEC
1978	Establishment of the Information & International Exchange Division
1979	Opening of the Information Center for Women's Education
1991	Launch of the on-line information retrieval service (Winet)
2001	Conversion to an Independent Administrative Institution
2005	NWEC Gender Statistics Data book was awarded by the Japan Statistical Association
2006	Total number of NWEC users exceeds 3,000,000
2008	Opening of the Women's Archive Center
2010	President of NWEC was awarded for "Chief Cabinet Secretary's Commendation for Efforts toward the Formation of a Gender-equal Society"
2011	Start of the 3rd Five-Year medium-term plan
2016	Start of the 4th Five-Year medium-term plan
2017	Celebrate the 40th anniversary
2020	NWEC received the 16th JICA President Award
2021	Start of the 5th Five-Year medium-term plan
2022	45th Anniversary of its Founding

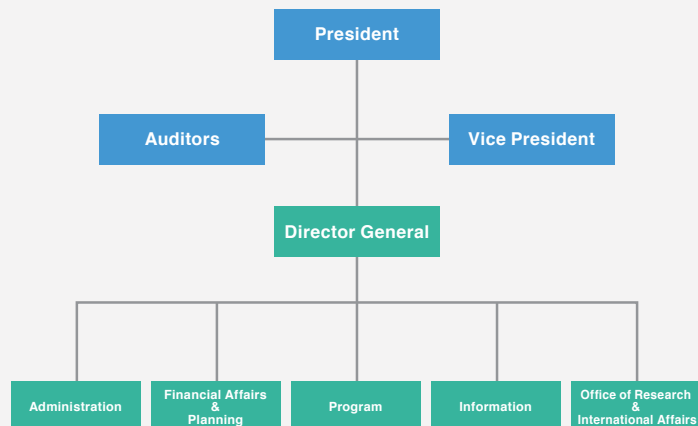


NWEC under construction (1976)



Celebration of the Thirtieth Anniversary (2007)

Organization



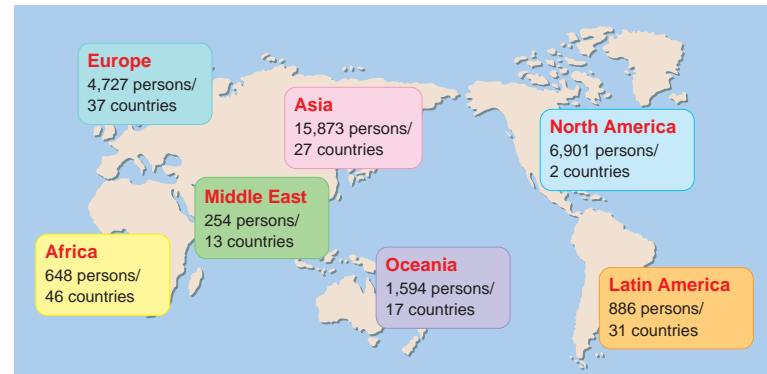
Number of Staff 49 As of April, 2023

Networking

NWEC has been expanding its partnership with key institution promoting gender equality in Asia.

- Korean Women's Development Institute
- Korean Institute for Gender Equality Promotion and Education
- University of the Philippines Center for Women's Studies
- Women Research Center of Yanbian University
- Ministry of Women's Affairs, Royal Government of Cambodia

Total of 30,883 overseas guests from 173 countries have visited NWEC since the opening to participate in international conferences, exchange programs and study tours (as of March 2023).



Location and Access

NWEC is situated in Saitama Prefecture, to the north-west of Tokyo.

- 12 min walk from Musashi Ranzan Station, Tobu Tojo Line
- 70 min from Ikebukuro Station, Tokyo
- 2 hours from Narita/Haneda International Airport



NWEC

National Women's Education Center of Japan

728 Sugaya, Ranzan-machi, Hiki-gun, Saitama, 355-0292, Japan

URL : <https://www.nwec.go.jp/en/index.html>, <https://www.nwec.go.jp>

Facebook : <https://www.facebook.com/NWECJapan>

Twitter : https://twitter.com/nwec_official

Administration Division

Tel: +81-493-62-6719

Financial Affairs and Planning

Tel: +81-493-62-6717

Program Division

Tel: +81-493-62-6724

Information Division

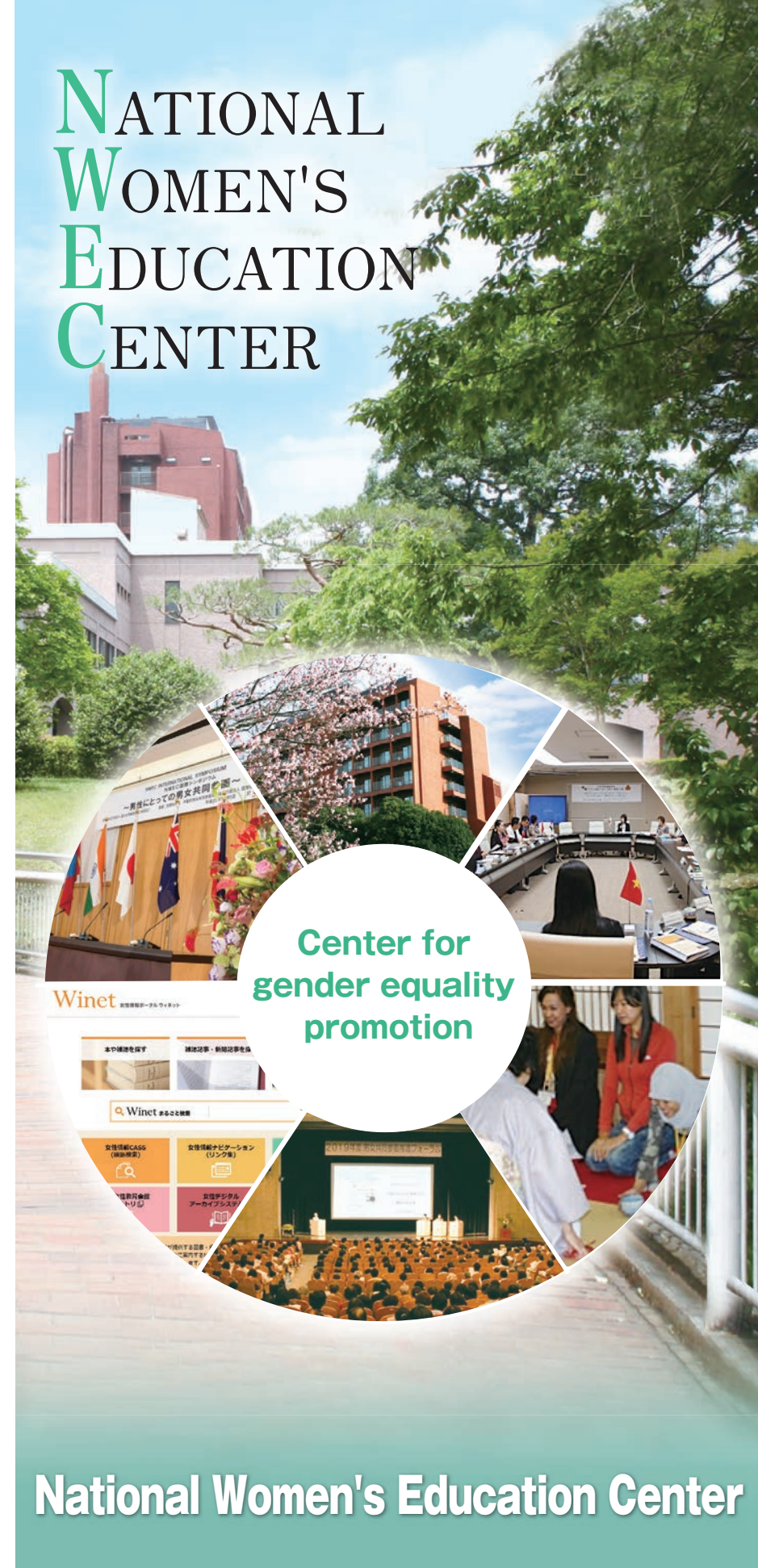
Tel: +81-493-62-6728

Office of Research and International Affairs

Tel: +81-493-62-6479



NATIONAL WOMEN'S EDUCATION CENTER



Center for gender equality promotion

National Women's Education Center



The National Women's Education Center (NWECC) strives toward the formation of a gender-equal society. Cooperating with organizations and institutions involved in gender equality and women's education in Japan and abroad, NWECC serves as a national center to deliver gender training opportunities, conducting research on emerging gender issues in Japan and the world. NWECC also collects and disseminates national and international materials and information on gender, women and family.

◀ President : Natsuko HAGIWARA

Vision/Mission

National Women's Education Center (NWECC) was established in 1977 with the aim of promoting women's education and contributing to formation of a gender-equal society. For more than 45 years since its founding, NWECC has been conducting training, research, information dissemination and international cooperation.

Training

Research

International Cooperation

Information Dissemination

Programs

Training Programs

Capacity building training programs

- Training Course to Promote Gender Equality for Leaders
- Training Course for Counselors and Manager at Women's Center
- Gender Equality Training for Teachers and Staff
- Training on Gender Responsive Approach to Disaster Management
- Gender Equality Promotion Forum
- The Women's Empowerment Promotion Seminar
- Project Planning Training in Communities to Promote Gender Equality



International Cooperation

Training programs and seminars on global issues

- Seminar for Gender Equality Officers and Women Leaders in the Asia Region
- NWECC Global Seminar



Seminar for Gender Equality Officers and Women Leaders in Asia

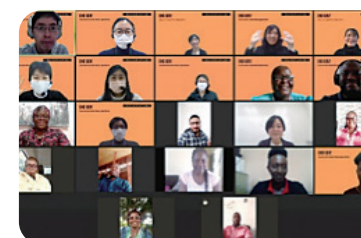


NWECC Global Seminar

- Seminar on Promotion of Networking among Asian Countries on Anti-Trafficking in Persons
- Seminar on Eradicating Sexual and Gender-Based Violence (SGBV)



Seminar on Promotion of Networking among Asian Countries on Anti-Trafficking in Persons

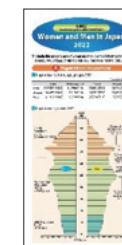


Seminar on Eradicating Sexual and Gender-Based Violence (SGBV)

Research Projects

Conduct Research on various gender issues

- Research on Women's Career and Promotion of Decision Making
- Research on Promotion of Gender Equality in School Education
- Research on Support for Women in Difficulties
- Research on Gender Statistics



Leaflet on Gender Statistics



Leaflet on VAW and Trafficking



Leaflet on Foreign Women Living in Japan

Information Dissemination

Provide Information on various gender issues

- Information Center for Women's Education

Information Center for Women's Education collects, organizes and provides information and materials related to gender equality, women and family.

As of March 2023, the Information Center's collection contains 147,746 books; 4,187 periodicals and 574,050 newspaper clippings



- Women's Information Portal "Winet"



"Winet" provides various database on NWECC website:
<https://winet.nwec.go.jp>

- Women's Archives Center
The Women's Archives Center collects and stores materials relating to women nationwide and women's organizations that made outstanding contributions to the formation of a gender-equal society in Japan.



- Women's Digital Archives System
The catalogue records and digital images of the collection are available at Women's Digital Archives System.