

7 Average length of Continuous employment Years

Year	Total		30-34 years old		55-59 years old	
	Women	Men	Women	Men	Women	Men
2020	9.3	13.4	6.3	7.1	14.7	22.4
1984	6.5	11.6	7.3	9.4	11.8	16.2

8 Wage gap in monthly scheduled earnings (ordinary worker) 1,000 Yen

Year	1990	2000	2010	2020
Women	175.0	220.6	227.6	251.8
Men	290.5	336.8	328.3	338.8
(Men=100)	60.2	65.5	69.3	74.3

E Health, Safety and Social Security

1 Mortality rate by major diseases 2019 (1980) Per 100,000 persons

	Malignant new growth (cancer)	Heart disease	Cerebral vascular disease	Pneumonia
Women	245.7(115.5)	172.4(100.5)	86.2(136.4)	66.8(24.4)
Men	366.0(163.5)	163.1(112.1)	86.0(142.7)	88.2(32.6)

2 Number of suicides Persons (Per 100,000 persons)

Year	Total	Women	Men
2020	21,081(16.7)	7,026(10.9)	14,055(22.9)
2019	20,169(16.0)	6,091 (9.4)	14,078(22.9)
2000	31,957(25.2)	9,230(14.2)	22,727(36.6)
1990	21,346(17.3)	8,244(13.1)	13,102(21.6)

3 Victim of murder and assault between spouses persons

Year	Murder		Physical assault		Assault	
	Women	Men	Women	Men	Women	Men
2020	86	58	2,027	226	3,893	469
	59.7%	40.3%	90.0%	10.0%	89.2%	10.8%
2010	114	70	1,437	86	1,376	76
	62.0%	38.0%	94.4%	5.6%	94.8%	5.2%

4 Female victims of rape and indecent assault

Year	1993	2000	2019
Number of rape victims (Women) (Case)	1,611	2,260	1,355
Crime rate (Per 100,000 persons)	2.5	3.5	2.1
Number of indecent assault victims (Women) (Case)	3,489	7,122	4,761
Crime rate (Per 100,000 persons)	5.5	11.0	7.4

5 Persons that received public livelihood aid persons

Year	Women		Year	Men	
	Women	Men		Women	Men
2000	562,150	463,670	2019	1,035,310	1,012,335
	54.8%	45.2%		50.6%	49.4%

6 Poverty rate among households with children %

Year	1985	2000	2018
	10.3	13.0	13.1

7 Number of Consultation for child abuse cases Number of Cases

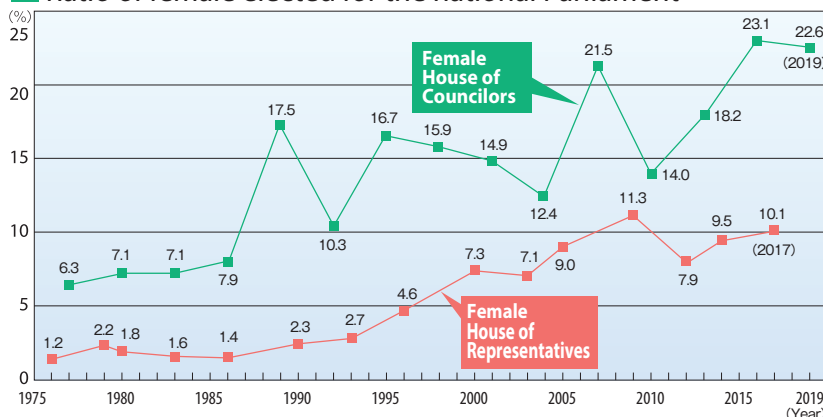
Year	1990	2000	2019
	1,101	17,725	193,780

8 Number of people qualified for long-term care insurance 10,000 persons

	Total	Women	Men	Women/Men
Jan, 2021	679.1	464.1	214.9	2.2
June, 2001	270.1	189.8	80.2	2.4

F Decision Making

1 Ratio of female elected for the national Parliament



2 Number and ratio of Female head of local government persons (%)

Year	Prefectural Governor		City Mayor		Designated City Mayor		Head of Special Ward		Town & Village Mayor	
	Women	Men	Women	Men	Women	Men	Women	Men	Women	Men
2020	2(4.3)	45(95.7)	25(3.2)	765(96.8)	2(10.0)	18(90.0)	1(4.3)	22(95.7)	8(0.9)	918(99.1)
2010	3(6.4)	44(93.6)	16(2.0)	769(98.0)	1(5.3)	18(94.7)	2(8.7)	21(91.3)	6(0.6)	934(99.4)
2005	4(8.5)	43(91.5)	8(1.1)	746(98.9)	0(0)	14(100.0)	1(4.3)	22(95.7)	6(0.4)	1,378(99.6)

3 Ratio of Female legislators in local assemblies %

Year	Prefecture	Special ward	City	Government Ordinance City	Town & Village
2020	11.5	30.2	16.2	20.5	11.3
2010	8.1	24.6	12.7	17.6	8.1

4 International Comparison of ratio of women members in Lower or single House (IPU) Japan (9.9%) is ranked 165th among 193 countries. (March, 2021)

G International Status Index

1 Global Gender Gap Index World Economic Forum, 2021 Japan is ranked 120th among 156 countries.

2 Gender Inequality Index UNDP, 2020 Japan is ranked 19th among 189 countries.



独立行政法人
国立女性教育会館
NATIONAL WOMEN'S EDUCATION CENTER

National Women's Education Center, Japan
728 Sugaya, Ranzan-machi, Hiki-gun, Saitama, 355-0292, Japan
TEL +81-493-62-6479 FAX +81-493-62-9034
Email rese@nwec.jp <https://www.nwec.jp/en/index.html>

Please visit our website for more information



NWEC
Summary Gender Statistics
Women and Men in Japan
2021

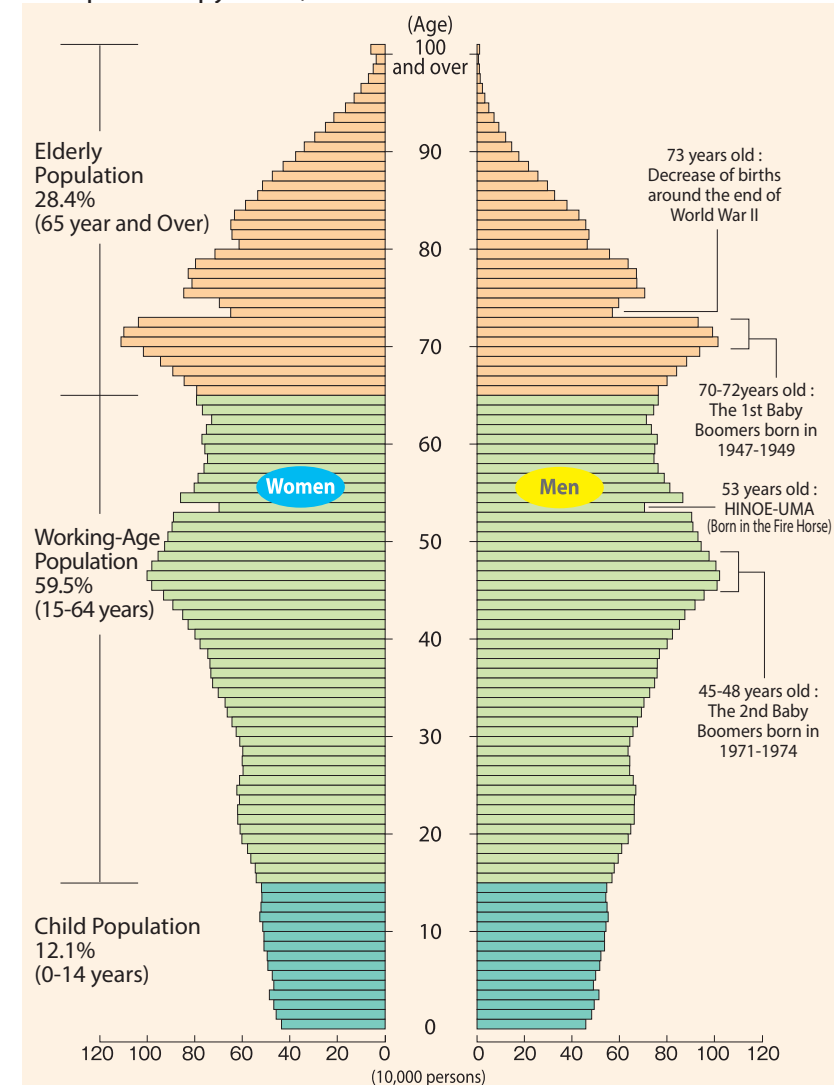
This leaflet illustrates the state of women and men in some of the important areas in Japanese society. Data are primarily extracted from government official statistics.

A Population/ Household

1 Population by three age groups, 2019 1,000 persons (%)

	Total	0-14 years old	15-64	65 and over
Total	126,167(100.0)	15,210(12.1)	75,072(59.5)	35,885(28.4)
Women	64,756(100.0)	7,420(11.5)	37,050(57.2)	20,285(31.3)
Men	61,411(100.0)	7,790(12.7)	38,022(61.9)	15,600(25.4)

2 Population pyramid, 2019



3 Population projection as of Jan. 2017

10,000 persons (%)

Year	Total	0-14 years old	15-64	65 and over
2015	12,709	1,594(12.5)	7,728(60.8)	3,386(26.6)
2040	11,091	1,193(10.8)	5,977(53.9)	3,920(35.3)
2065	8,807	897(10.2)	4,529(51.4)	3,381(38.4)

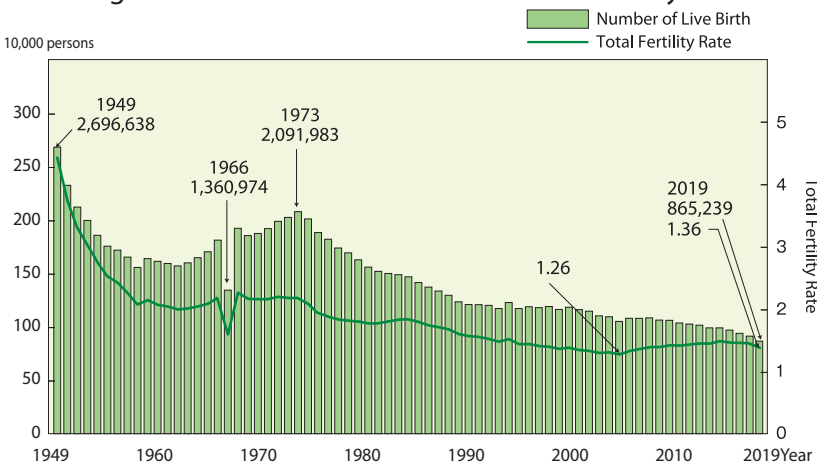
4 Average Life Expectancy at birth and Healthy Life Expectancy

Age

2019	Women : 87.45(74.79*)	Men : 81.41(72.14*)
1975	Women : 76.89	Men : 71.73
1955	Women : 67.75	Men : 63.60

* is Healthy Life Expectancy (HALE) as of 2016

5 Change in Number of Live Births and Total Fertility Rate



6 Average Household size

Number of Persons

1986	3.22	1995	2.91	2019	2.39
------	------	------	------	------	------

7 Distribution of individuals by marital status

15 years old and over

%

Year		Never married	Married	Widowed	Divorced
2015	Women	23.2	56.3	14.2	6.3
	Men	31.8	60.9	3.2	4.1
1990	Women	23.6	60.7	12.4	3.3
	Men	31.4	64.3	2.4	1.9

8 Mean age at first marriage

Age

2019	Wife : 29.6	Husband : 31.2	Age difference : 1.6
1990	Wife : 25.9	Husband : 28.4	Age difference : 2.5

9 Number of divorces

Year	*Number of divorces	**Number of Divorces after living together for more than 20 yrs	**/*
2019	208,489	40,395	19.4%
2002	289,836	45,536	15.7%
1990	157,608	21,717	13.8%

B Education

1 Advancement rate to higher education at the time of high school graduation

%

Year	Specialized Training College Postsecondary course		Junior College		University		Graduate school	
	Women	Men	Women	Men	Women	Men	Women	Men
2020	20.3	13.5	7.4	0.8	47.3	48.9	5.6	14.2
2000	19.2	15.0	17.6	1.8	28.6	39.5	6.3	12.8
1990*	16.1	15.0	23.0	1.4	13.3	21.7	3.1	7.7

* Data for Specialized Training College from year 1991

2 Ratio of female undergraduate students by major fields of study

Person (%)

Year		Humanities	Social Science	Science	Engineering
2020	Women	237,533(65.2)	297,938(35.7)	21,806(27.8)	59,858(15.7)
	Men	126,941(34.8)	537,657(64.3)	56,547(72.2)	322,483(84.3)
2000	Women	275,733(67.1)	267,789(27.2)	22,282(25.3)	46,489(10.0)
	Men	135,246(32.9)	717,828(72.8)	65,619(74.7)	420,673(90.0)

C Time Use

1 Time Spent on House-related work*

Hour : Minutes

Day/Year	Total		Women		Men	
	2006	2016	2006	2016	2006	2016
Weekday	2:02	2:02	3:32	3:25	0:30	0:34
Saturday	2:20	2:20	3:40	3:35	0:53	1:02
Sunday	2:24	2:27	3:40	3:37	1:04	1:11

* Includes Housework, Caring or Nursing, Child Care and Shopping

2 Time Spent for Child Care and Housework by husbands and wives with a child or children under six years old (per day) (2004~2016)

Hour : Minutes

		Japan	USA	France	Germany	Sweden
Wife	Total hours spent on child care and housework	7:34	5:40	5:49	6:11	5:29
	Hours spent exclusively on child care	3:45	2:18	1:57	2:18	2:10
Husband	Total hours spent on child care and housework	1:23	3:10	2:30	3:00	3:21
	Hours spent exclusively on child care	0:49	1:20	0:40	0:59	1:07

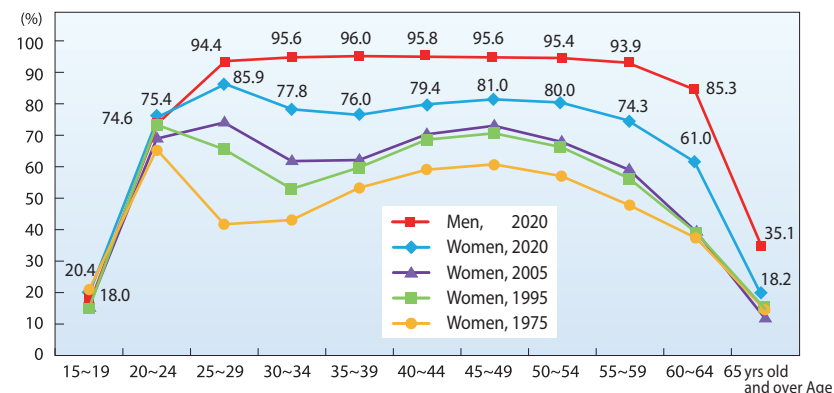
D Labour and Income

1 Labour force status

10,000 persons (%)

Year		Labour force	Employed	Unemployed	Not in labour force
2020	Women	3,044(53.2)	2,968(51.8)	76(1.3)	2,677(46.8)
	Men	3,823(71.4)	3,709(69.3)	115(2.1)	1,527(28.5)
1990	Women	2,593(50.1)	2,536(49.0)	57(1.1)	2,562(49.5)
	Men	3,791(77.2)	3,713(75.6)	77(1.6)	1,095(22.3)

2 Labour force participation rate by age groups



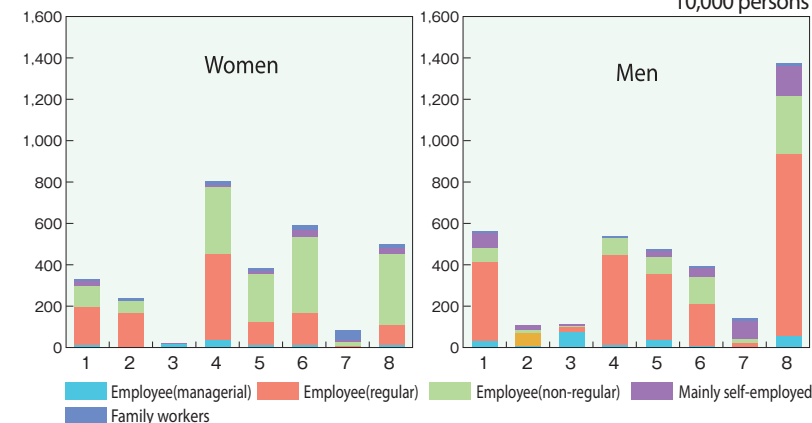
3 Employment status

10,000 persons

Year	Self-employed workers		Family workers		Employees	
	Women	Men	Women	Men	Women	Men
2020	135(2.0)	391(5.9)	113(1.7)	27(0.4)	2,703(40.5)	3,270(49.0)
2010	146(2.3)	433(6.9)	155(2.5)	34(0.5)	2,329(37.2)	3,133(50.1)
2000	204(3.2)	527(8.2)	278(4.3)	63(1.0)	2,140(33.2)	3,216(49.9)

4 Occupational segregation by gender (horizontal), 2020

10,000 persons



※ 1 : Specialists and technical workers, 2 : Specialists and technical workers(Health care), 3 : Administrative and managerial workers, 4 : Clerical workers, 5 : Sales workers, 6 : Service workers and Security workers, 7 : Agriculture, forestry and fishery workers, 8 : Construction workers, machine operation and production, manufacturing, and mining labor

5 Ratio of women by managerial position

%

2020	Director : 9.1	Section manager : 12.1	Chief : 22.0
1997	Director : 2.2	Section manager : 3.7	Chief : 7.8

Private corporations with over 100 employees

6 Number of employees by type of employment, 2020

10,000 persons (%)

	Regular workers	Part-time workers	Temporary workers	Entrusted employees & Other
Total	3,539(62.8)	1,482(26.2)	139(2.5)	480(8.5)
Women	1,194(45.6)	1,125(42.9)	85(3.2)	216(8.2)
Men	2,345(77.9)	357(11.6)	54(1.8)	264(8.8)
Women's ratio	33.7	75.9	61.2	45.0