

**6** Average length of Continuous employment Years

Year	Total		30-34 years old		55-59 years old	
	Women	Men	Women	Men	Women	Men
2021	9.7	13.7	6.4	7.4	15.4	22.4
2000	8.8	13.3	8.1	8.4	15.6	22.5

**7** Wage gap in monthly scheduled earnings (ordinary worker) 1,000 Yen

Year	1990	2000	2010	2021
Women	175.0	220.6	227.6	253.6
Men	290.5	336.8	328.3	337.2
(Men=100)	60.2	65.5	69.3	75.2

**E Health, Safety and Social Security**

**1** Mortality rate by major causes Per 100,000 persons  
Year 2020 (2000)

	Malignant new growth(cancer)	Heart disease	Senility	Cerebral vascular disease	Pneumonia
Women	248(181)	168(116)	153(24)	83(108)	53(63)
Men	368(291)	166(117)	60(10)	84(103)	75(76)

**2** Number of suicides Persons (Per 100,000 persons)

Year	Total	Women	Men
2021	21,007(16.8)	7,068(11.0)	13,939(22.9)
2020	21,081(16.7)	7,026(10.8)	14,055(22.9)
2019	20,169(16.0)	6,091 (9.4)	14,078(22.9)
2000	31,957(25.2)	9,230(14.2)	22,727(36.6)

**3** Victim of murder and assault between spouses Number of cases

Year	Murder		Physical assault		Assault	
	Women	Men	Women	Men	Women	Men
2020	86	58	2,027	226	3,893	469
	59.7%	40.3%	90.0%	10.0%	89.2%	10.8%
2010	114	70	1,437	86	1,376	76
	62.0%	38.0%	94.4%	5.6%	94.8%	5.2%

**4** Victims of rape and indecent assault Persons (Per 100,000 persons)

Year	2000		2020	
	Women	Men	Women	Men
Rape, number of victims (Rate)	2,260(3.5)	1,260(1.9)	72(0.1)	
Indecent assault, number of victims (Rate)	7,122(11.0)	3,995(6.2)	159(0.3)	

**5** Persons that received public livelihood aid persons

Year	Women	Men	Year	Women	Men
	2000	562,150		463,670	2019
	54.8%	45.2%		50.6%	49.4%

**6** Poverty rate among households with children %

Year	Year	Year
1994	2000	2018
11.3	13.0	13.1

**7** Number of Consultation for child abuse cases Number of Cases

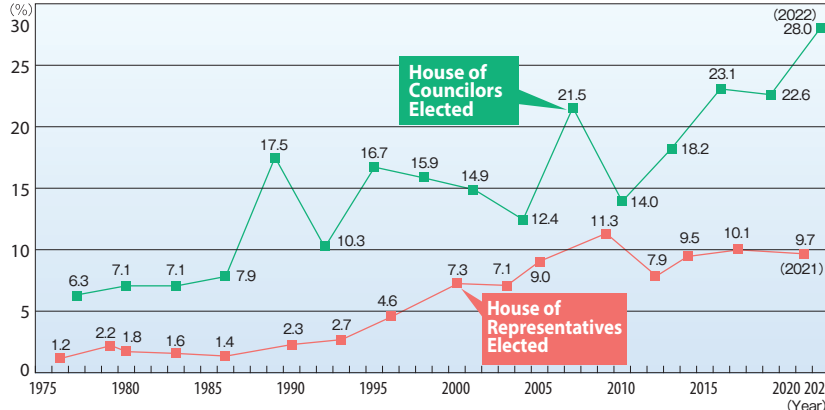
Year	Year	Year
1990	2000	2020
1,101	17,725	205,044

**8** Number of people qualified for long-term care insurance 10,000 persons

Year	Total	Women	Men	Women/Men
2019	668.6	457.7	211.0	2.2
2014	605.8	419.1	186.7	2.2

**F Decision Making**

**1** Ratio of female elected for the national Parliament



**2** Number and ratio of Female head of local government persons (%)

Year	Prefectural Governor		City Mayor		Designated City Mayor		Head of Special Ward		Town & Village Mayor	
	Women	Men	Women	Men	Women	Men	Women	Men	Women	Men
2021*	2(4.3)	45(95.7)	29(3.7)	761(96.3)	1(5.0)	19(95.0)	2(8.7)	21(91.3)	10(1.1)	914(98.9)
2015	2(4.3)	45(95.7)	16(2.0)	774(98.0)	2(10.0)	18(90.0)	1(4.3)	22(95.7)	5(0.5)	922(99.5)
2010	3(6.4)	44(93.6)	16(2.0)	769(98.0)	1(5.3)	18(94.7)	2(8.7)	21(91.3)	6(0.6)	934(99.4)

\* Data for Special Ward from year 2022

**3** Ratio of Female legislators in local assemblies %

Year	Prefecture	Special ward	City	Designated City	Town & Village
2021	11.8	30.7	16.8	20.7	11.7
2015	9.8	27.0	13.9	17.2	9.5

**4** International Comparison of ratio of women members in Lower or single House (IPU)

Japan (9.7%) is ranked 166th among 193 countries. (March, 2022)

**G International Status Index**

**1** Global Gender Gap Index World Economic Forum, 2022

Japan is ranked 116th among 146 countries.

**2** Human Development Index UNDP, 2020

Japan is ranked 19th among 189 countries.

**3** SDGs Index Sustainable Development Report, 2022

Japan's country score is 79.6 (19th).

**NWEC**  
Summary Gender Statistics  
**Women and Men in Japan**  
**2022**

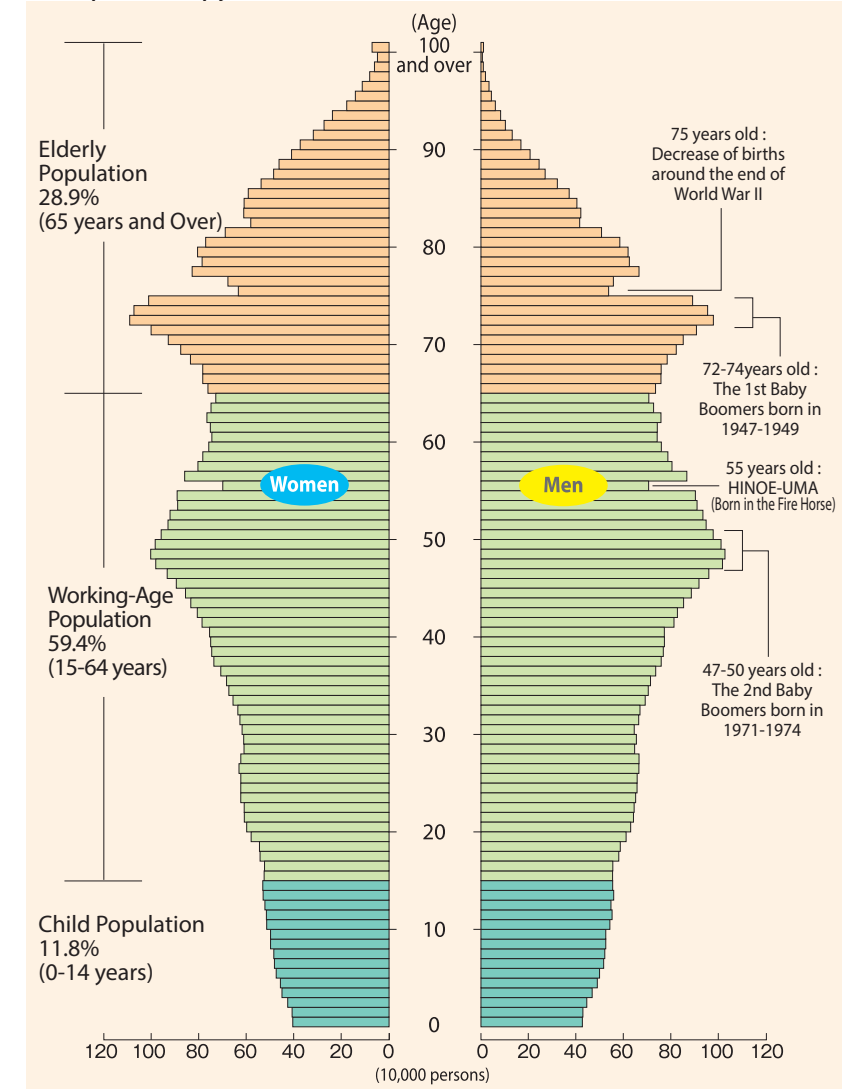
This leaflet illustrates the state of women and men in some of the important areas in Japanese society. Data are primarily extracted from government official statistics.

**A Population/ Household**

**1** Population by three age groups, 2021

	Total	0-14 years old	15-64	65 and over
Total	125,502(100.0)	14,784(11.8)	74,504(59.4)	36,214(28.9)
Women	64,483(100.0)	7,212(11.2)	36,780(57.0)	20,492(31.8)
Men	61,019(100.0)	7,573(12.4)	37,724(61.8)	15,722(25.8)

**2** Population pyramid, 2021



**National Women's Education Center, Japan**  
728 Sugaya, Ranzan-machi, Hiki-gun, Saitama, 355-0292, Japan  
TEL +81-493-62-6479 FAX +81-493-62-9034  
Email rese@nwec.jp <https://www.nwec.jp/en/index.html>

Please visit our website for more information



### 3 Population projection as of Jan. 2017

10,000 persons (%)

Year	Total	0-14 years old	15-64	65 and over
2015	12,709	1,594(12.5)	7,728(60.8)	3,386(26.6)
2040	11,091	1,193(10.8)	5,977(53.9)	3,920(35.3)
2065	8,807	897(10.2)	4,529(51.4)	3,381(38.4)

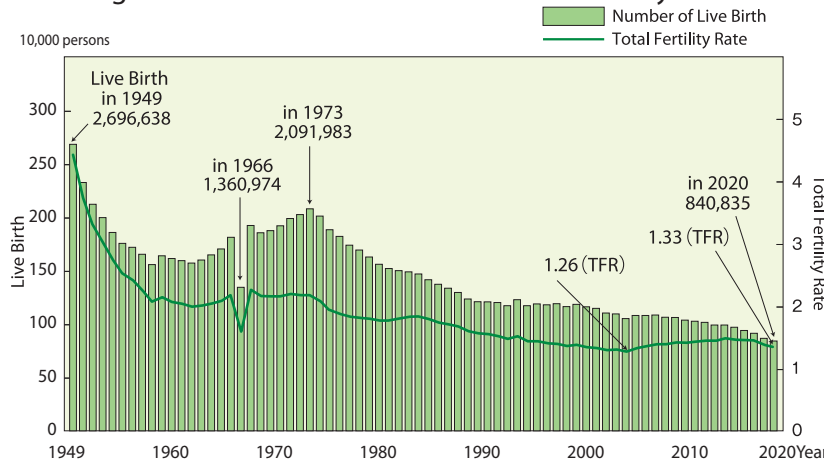
### 4 Average Life Expectancy at birth and Healthy Life Expectancy

Age

Year	Women	Men
2020	87.74(75.38*)	81.64(72.68*)
1975	76.89	71.73
1955	67.75	63.60

\* is Healthy Life Expectancy (HALE) as of 2019

### 5 Change in Number of Live Birth and Total Fertility Rate



### 6 Average Household size

Number of Persons

Year	Year	Year
1986	1995	2019
3.22	2.91	2.39

### 7 Distribution of individuals by marital status

15 years old and over

%

Year	Never married	Married	Widowed	Divorced
2020	Women: 23.4	56.1	13.9	6.6
	Men: 31.9	60.8	3.2	4.1
1990	Women: 23.6	60.7	12.4	3.3
	Men: 31.4	64.3	2.4	1.9

### 8 Mean age at first marriage

Age

Year	Wife	Husband	Age difference
2020	29.4	31.0	1.6
1990	25.9	28.4	2.5

### 9 Number of divorces

Year	*Number of divorces	**Number of Divorces after living together for more than 20 yrs	**/*
2020	193,251	38,980	20.2%
2002	289,836	45,536	15.7%
1990	157,608	21,717	13.8%

## B Education

### 1 Advancement rate to higher education at the time of high school graduation

%

Year	Specialized Training College Postsecondary course		Junior College		University		Graduate school	
	Women	Men	Women	Men	Women	Men	Women	Men
2021	20.9	13.9	6.9	0.8	48.6	50.7	5.9	14.6
2000	19.2	15.0	17.6	1.8	28.6	39.5	6.3	12.8
1990*	16.1	15.0	23.0	1.4	13.3	21.7	3.1	7.7

\* Data for Specialized Training College from year 1991

### 2 Ratio of female undergraduate students by major fields of study

Persons (%)

Year	Humanities	Social Science	Science	Engineering
2021	Women: 235,608(65.0)	298,186(35.8)	21,816(27.8)	59,921(15.7)
	Men: 126,934(35.0)	534,918(64.2)	56,648(72.2)	321,633(84.3)
2000	Women: 275,733(67.1)	267,789(27.2)	22,282(25.3)	46,489(10.0)
	Men: 135,246(32.9)	717,828(72.8)	65,619(74.7)	420,673(90.0)

## C Time Use

### 1 Time Spent on House-related work\*

Hours : Minutes

Day/Year	Total		Women		Men	
	2006	2016	2006	2016	2006	2016
Weekday	2:02	2:02	3:32	3:25	0:30	0:34
Saturday	2:20	2:20	3:40	3:35	0:53	1:02
Sunday	2:24	2:27	3:40	3:37	1:04	1:11

\* Includes Housework, Caring or Nursing, Child Care and Shopping

### 2 Time Spent for Child Care and Housework by husbands and wives with a child or children under six years old (per day) (2004~2016)

Hours : Minutes

		Japan	USA	France	Germany	Sweden
		<b>Wife</b>	Total hours spent on child care and housework: 7:34	5:40	5:49	6:11
	Hours spent exclusively on child care: 3:45	2:18	1:57	2:18	2:10	
<b>Husband</b>	Total hours spent on child care and housework: 1:23	3:10	2:30	3:00	3:21	
	Hours spent exclusively on child care: 0:49	1:20	0:40	0:59	1:07	

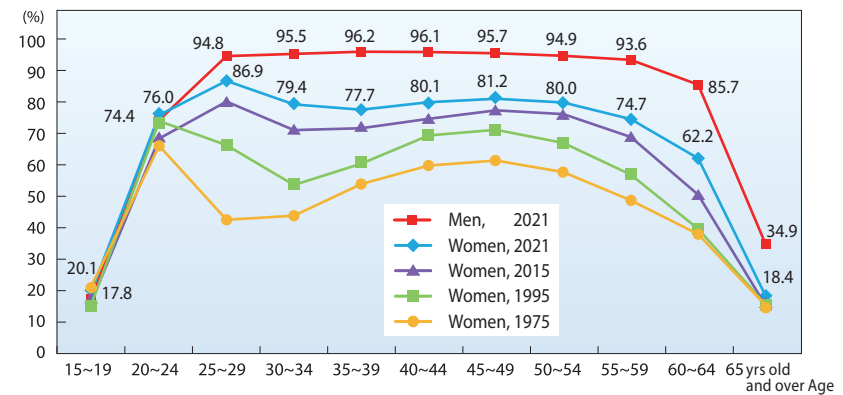
## D Labour and Income

### 1 Labour force status

10,000 persons (%)

Year	Labour force	Employed	Unemployed	Not in labour force
2021	Women: 3,057(53.5)	2,980(52.2)	77(1.3)	2,650(46.4)
	Men: 3,803(71.3)	3,687(69.1)	116(2.2)	1,526(28.6)
2000	Women: 2,762(49.4)	2,638(47.2)	124(2.2)	2,822(50.5)
	Men: 4,010(76.3)	3,815(72.6)	195(3.7)	1,241(23.6)

### 2 Labour force participation rate by age groups



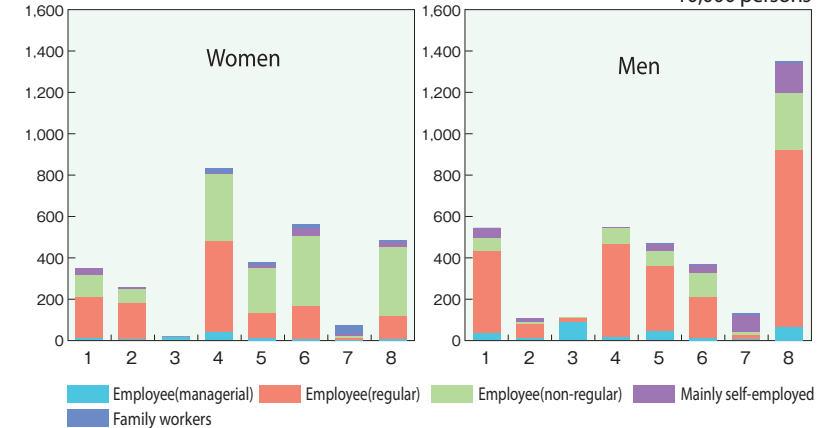
### 3 Number of employees by type of employment, 2021

10,000 persons (%)

	Employees	Executives	Regular workers
	Total	5,973(100.0)	343(5.7)
Women	2,717(100.0)	82(3.0)	1,222(45.0)
Men	3,256(100.0)	261(8.0)	2,343(72.0)
Women's ratio	45.5	23.9	34.3
	Part-time workers	Temporary workers	Entrusted employees & Other
	Total	1,455(24.4)	140(2.3)
Women	1,116(41.1)	87(3.2)	210(7.7)
Men	340(10.4)	53(1.6)	259(8.0)
Women's ratio	76.7	62.1	44.8

### 4 Occupational segregation by gender (horizontal), 2021

10,000 persons



※ 1 : Specialists and technical workers, 2 : Specialists and technical workers(Health care), 3 : Administrative and managerial workers, 4 : Clerical workers, 5 : Sales workers, 6 : Service workers and security workers, 7 : Agriculture, forestry and fishery workers, 8 : Construction workers, machine operation and production, manufacturing, and mining labor

### 5 Ratio of women in managerial position (chief or above, including executives)

%

Year	Year
2015	2020
10.2	12.9

Private corporations with over 30 employees