

■ History

NWEC was established in July 1977 as an institution affiliated to the Ministry of Education. Numerous women's organizations and researchers supported the opening of NWEC.

1977	Establishment of NWEC
1978	Establishment of the Information & International Exchange Division
1979	Opening of the Information Center for Women's Education
1991	Launch of the on-line information retrieval service (Winet)
2001	Conversion to an Independent Administrative Institution
2005	NWEC Gender Statistics Data book was awarded by the Japan Statistical Association
2006	Total number of NWEC users exceeds 3,000,000
2008	Opening of the Women's Archive Center
2010	President of NWEC was awarded for "Chief Cabinet Secretary's Commendation for Efforts toward the Formation of a Gender-equal Society"
2011	Start of the 3rd Five-Year medium -term plan
2016	Start of the 4th Five-Year medium -term plan
2017	Celebrate the 40th anniversary
2020	NWEC received the 16th JICA President Award
2021	Start of the 5th Five-Year medium -term plan
2022	45th Anniversary of its Founding

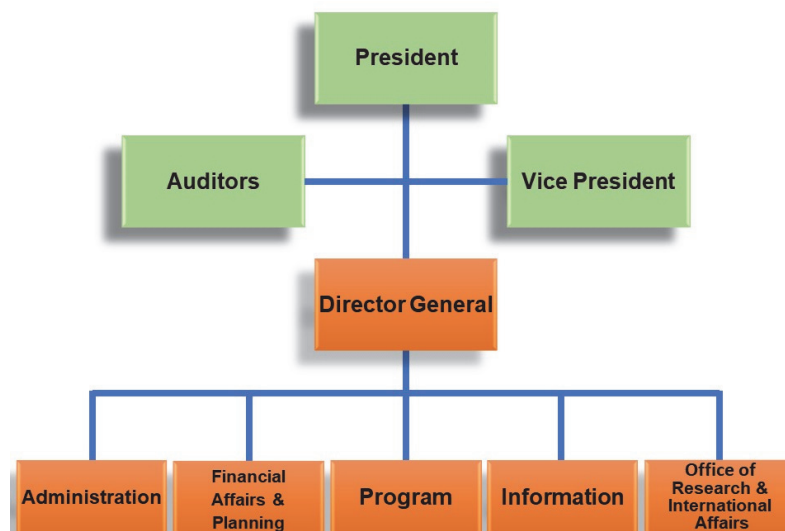


NWEC under construction (1976)



Celebration of the Thirtieth Anniversary

■ Organization



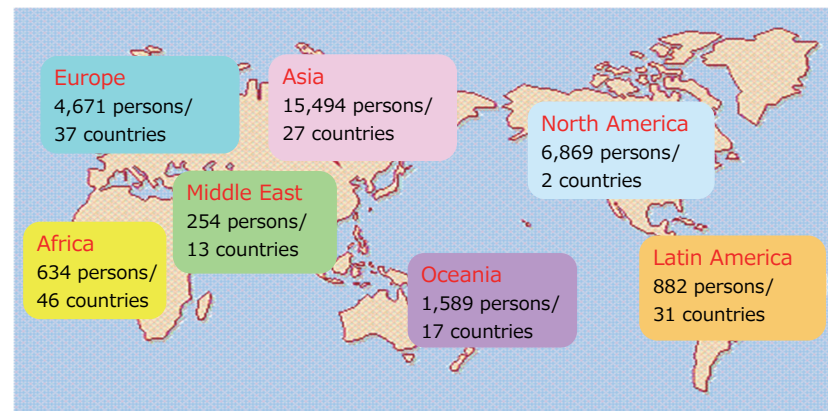
Number of Staff 47
As of April, 2022

■ Networking

NWEC has been expanding its partnership with key institution promoting gender equality in Asia.

- Korean Women's Development Institute
- Korean Institute for Gender Equality Promotion and Education
- University of the Philippines Center for Women's Studies
- Women Research Center of Yanbian University
- Ministry of Women's Affairs, Royal Government of Cambodia

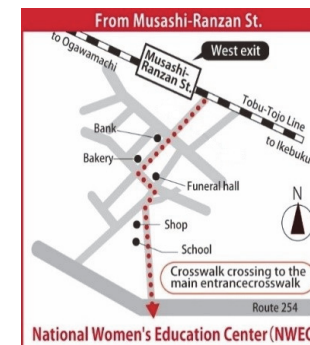
Total of 30,393 overseas guests from 173 countries have visited NWEC since the opening to participate in international conferences, exchange programs and study tours (as of March 2022).



■ Location and Access

NWEC is situated in Saitama Prefecture, to the north-west of Tokyo.

- 12 min walk from Musashi Ranzan Station, Tobu Tojo Line
- 70 min from Ikebukuro Station, Tokyo
- 2 hours from Narita/Haneda International Airport



National Women's Education Center of Japan

728 Sugaya, Ranzan-machi, Hiki-gun, Saitama, 355-0292, Japan
 URL: <https://www.nwec.jp/en/index.html> , <https://www.nwec.jp>
 E-mail: koho@nwec.jp
 Facebook: <https://www.facebook.com/NWECJapan>
 Twitter : https://twitter.com/nwec_official



Administration Division	Tel: +81-493-62-6714
Financial Affairs and Planning	Tel: +81-493-62-6717
Program Division	Tel: +81-493-62-6724
Information Division	Tel: +81-493-62-6728
Office of Research and International Affairs	Tel: +81-493-62-6479

National Women's Education Center



Center for Gender Equality Promotion



The National Women's Education Center (NWECC) strives toward the formation of a gender-equal society. Cooperating with organizations and institutions involved in gender equality and women's education in Japan and abroad, NWECC serves as a national center to deliver gender training opportunities, conducting research on emerging gender issues in Japan and the world. NWECC also collects and disseminates national and international materials and information on gender, women and family.



President:
Natsuko HAGIWARA

■ Vision/Mission

National Women's Education Center (NWECC) was established in 1977 with the aim of promoting women's education and contributing to formation of a gender-equal society. For more than 45 years since its founding, NWECC has been conducting training, research, information dissemination and international cooperation.

Training

Research

International
Cooperation

Information
Dissemination

■ Programs

Training Programs

Capacity building training programs

- Training Course to Promote Gender Equality for Leaders
- Training Course for Counselors at Women's Facilities
- Gender Equality Training for Teachers and Staff
- Training on Gender Responsive Approach to Disaster Management
- Forum on the Promotion of Gender Equality
- The Women's Empowerment Promotion Seminar
- Project Planning Training in Communities to Promote Gender Equality



International Programs

Training programs and seminars on global issues

- Seminar for Gender Equality Officers and Women Leaders in the Asia Region
- NWECC Global Seminar



Seminar for Gender Equality Officers
and Women Leaders in Asia



NWECC Global Seminar

- Seminar on Promotion of Networking among Asian Countries on Anti-Trafficking in Persons



Research Projects

Conduct Research on various gender issues

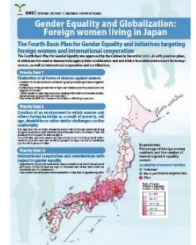
- Research on Women's Career and Promotion of Decision Making
- Research on Promotion of Gender Equality in School Education
- Research on Support for Women in Difficulties
- Research on Gender Statistics



Leaflet on Gender
Statistics



Leaflet on VAW and
Trafficking



Leaflet on Foreign
Women Living in Japan

Information Dissemination

Provide Information on various gender issues

- Information Center for Women's Education

Information Center for Women's Education collects, organizes and provides information and materials related to gender equality, women and family.

As of March 2022, the Information Center's collection contains 144,550 books; 4,176 periodicals and 551,028 newspaper clippings



- Women's Information Portal "Winet"



"Winet" provides various
database on NWECC website:
<https://winet.nwec.go.jp>

- Women's Archives Center

The Women's Archives Center collects and stores materials relating to women nationwide and women's organizations that made outstanding contributions to the formation of a gender-equal society in Japan.



- Women's Digital Archives System

The catalogue records and digital images of the collection are available at Women's Digital Archives System.