

## History

NWEC was established in July 1977 as an institution affiliated to the Ministry of Education. Numerous women's organizations and researchers supported the opening of NWEC.

1977	Establishment of NWEC
1978	Establishment of the Information & International Exchange Division
1979	Opening of the Information Center for Women's Education
1991	Launch of the on-line information retrieval service (Winet)
1997	Start of international training programs commissioned by JICA
2001	Conversion to an Independent Administrative Institution
2006	Conclusion of agreements on cooperation with Korean Institute for Gender Equality Promotion and Education (KIGEPE) and with Korean Women's Development Institute (KWDI)
2008	Opening of the Women's Archive Center
2009	Conclusion of agreements on cooperation with University of the Philippines Center for Women's Studies and with Women Research Center of Yanbian University, China
2010	Conclusion of an agreement on cooperation with the Ministry of Women's Affairs, Royal Government of Cambodia
2020	NWEC received the 16th JICA President Award
2022	45th Anniversary of its Founding Total number of NWEC users exceeds 5,000,000
2023	Gender Equality Bureau, Cabinet Office published a "Working Group Report on Strengthening the Functions of NWEC and Gender Equality Centers"
2025	A new bill on NWEC was submitted to the Diet

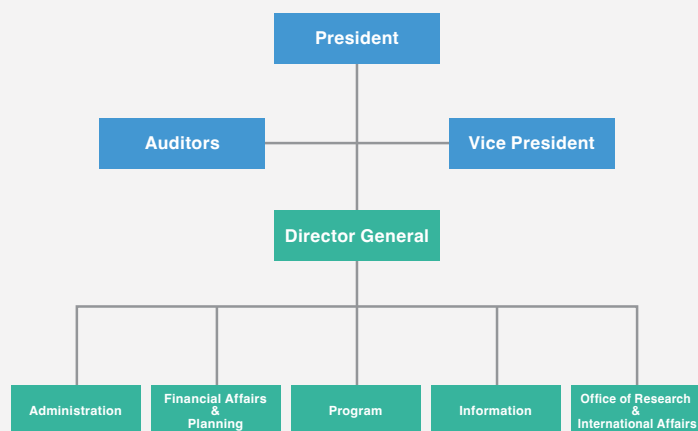


NWEC under construction (1976)



Celebration of the Thirtieth Anniversary (2007)

## Organization



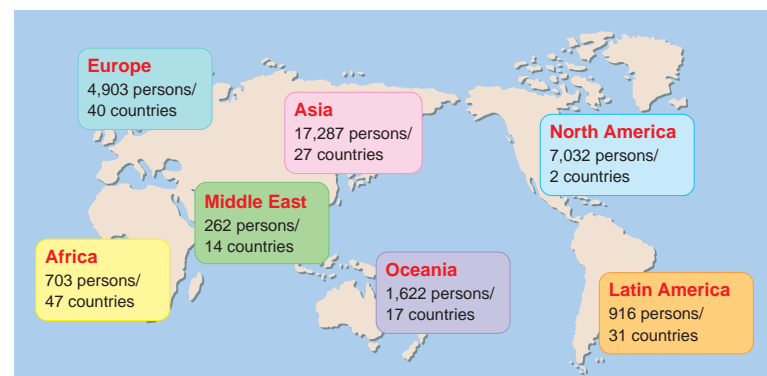
Number of Staff 56 As of April, 2025

## Networking

NWEC has been expanding its partnership with key institution promoting gender equality in Asia.

- Korean Women's Development Institute
- Korean Institute for Gender Equality Promotion and Education
- University of the Philippines Center for Women's Studies
- Women Research Center of Yanbian University
- Ministry of Women's Affairs, Royal Government of Cambodia

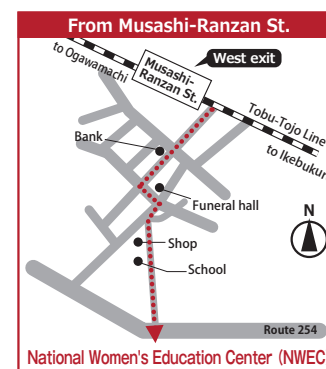
Total of 32,725 overseas guests from 178 countries have visited NWEC since the opening to participate in international conferences, exchange programs and study tours (as of March 2025).



## Location and Access

NWEC is situated in Saitama Prefecture, to the north-west of Tokyo.

- 12 min walk from Musashi Ranzan Station, Tobu Tojo Line
- 70 min from Ikebukuro Station, Tokyo
- 2 hours from Narita/Haneda International Airport



NWEC

### National Women's Education Center of Japan

728 Sugaya, Ranzan-machi, Hiki-gun, Saitama, 355-0292, Japan

URL : <https://www.nwec.go.jp/en/index.html>, <https://www.nwec.go.jp>

Facebook : <https://www.facebook.com/NWECJapan>

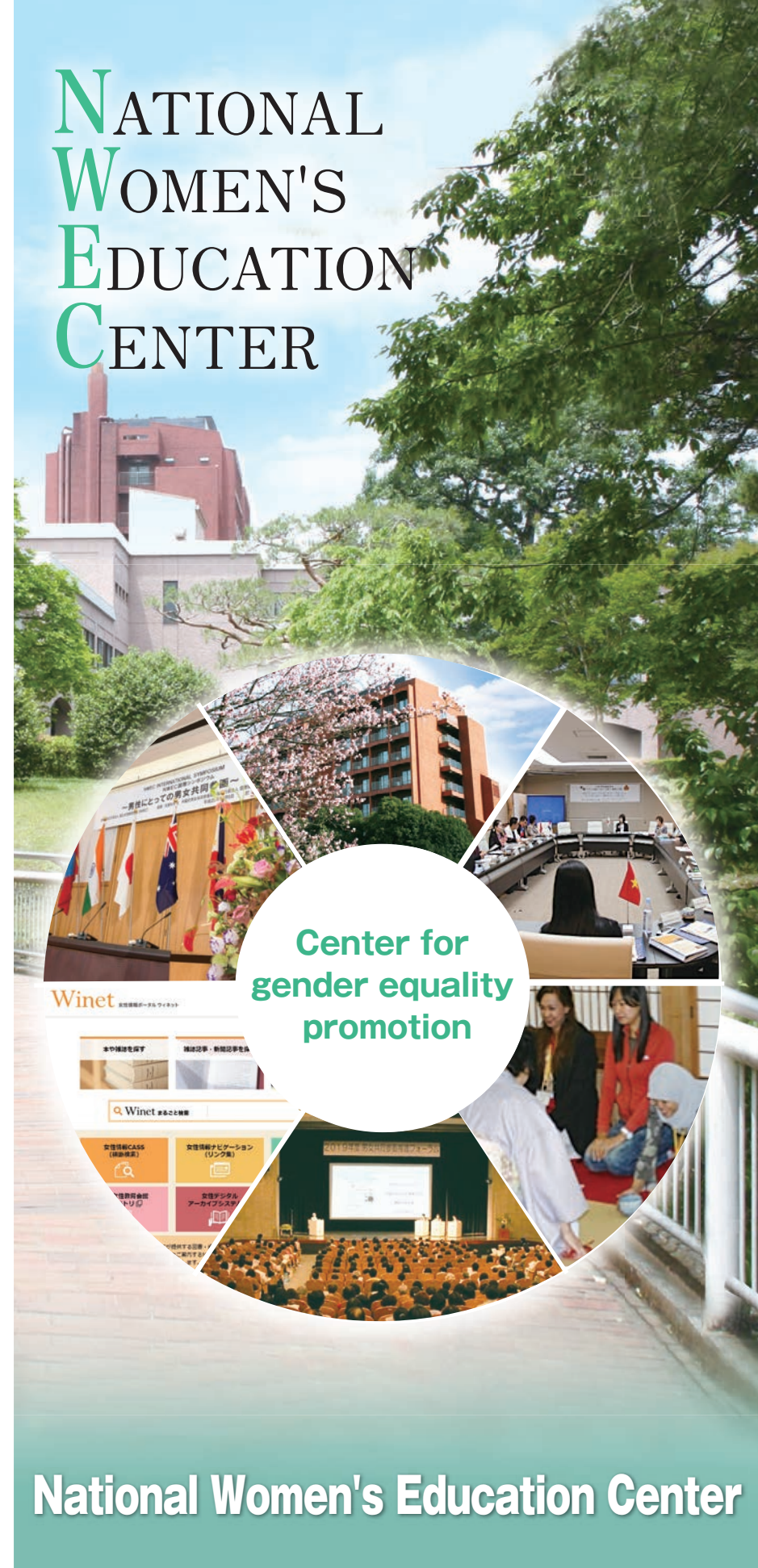
X : [https://x.com/nwec\\_official](https://x.com/nwec_official)

Administration Division  
Financial Affairs and Planning  
Program Division  
Information Division  
Office of Research and International Affairs

Tel: +81-493-62-6719  
Tel: +81-493-62-6717  
Tel: +81-493-62-6724  
Tel: +81-493-62-6728  
Tel: +81-493-62-6479



# NATIONAL WOMEN'S EDUCATION CENTER



Center for  
gender equality  
promotion

National Women's Education Center



The National Women's Education Center (NWECC) strives toward the formation of a gender-equal society. Cooperating with organizations and institutions involved in gender equality and women's education in Japan and abroad, NWECC serves as a national center to deliver gender training opportunities, conducting research on emerging gender issues in Japan and the world. NWECC also collects and disseminates national and international materials and information on gender, women and family.

◀ President : Natsuko HAGIWARA

## Vision/Mission

National Women's Education Center (NWECC) was established in 1977 with the aim of promoting women's education and contributing to formation of a gender-equal society. For more than 45 years since its founding, NWECC has been conducting training, research, information dissemination and international cooperation.

Training

Research

International  
Cooperation

Information  
Dissemination

## Programs

### Training Programs

#### Capacity building training programs

- Training Course to Promote Gender Equality
- Training Course for Counselors and Managers at Women's Centers
- Gender Equality Training for Teachers and Staff
- Training on Gender Responsive Approach to Disaster Management
- The Women's Empowerment Promotion Seminar
- Project Planning Training in Communities to Promote Gender Equality



## International Cooperation

#### Training programs and seminars on global issues

- International Conference / International Exchange
- NWECC Global Seminar



Participation CSW



NWECC Global Seminar

#### In cooperation with JICA (Japan International Cooperation Agency)

- Seminar on Promotion of Global Networking on Anti-Trafficking in Persons
- Seminar on Eradicating Sexual and Gender-Based Violence (SGBV)



Seminar on Promotion of Global Networking on Anti-Trafficking in Persons



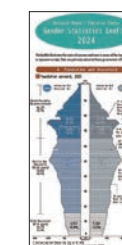
Seminar on Eradicating Sexual and Gender-Based Violence (SGBV)



## Research Projects

#### Conduct Research on various gender issues

- Research on Women's Career and Decision-Making
- Research on Promotion of Active Participation of Female School Teacher
- Research on Support for Women in Vulnerable Situations
- Research on Gender Statistics



Leaflet on Gender Statistics



Leaflet on VAW and Trafficking



Leaflet on Foreign Women Living in Japan



## Information Dissemination

#### Provide Information on various gender issues

- Information Center for Women's Education
- Information Center for Women's Education collects, organizes and provides information and materials related to gender equality, women and family.

As of March 2025, the Information Center's collection contains 150,672 books; 4,240 periodicals and 621,004 newspaper clippings.



- Women's Information Portal "Winet"



"Winet" provides various database on NWECC website:  
<https://winet.nwec.go.jp>



- Women's Archives Center
- The Women's Archives Center collects and stores materials relating to women nationwide and women's organizations that made outstanding contributions to the formation of a gender-equal society in Japan.



- Women's Digital Archives System
- The catalogue records and digital images of the collection are available at Women's Digital Archives System.