

MESSAGE FROM OUR PRESIDENT

More Partnerships, Greater Collaboration



Michiko Kanda, President,
National Women's Education Center

Half the year has already passed and we are into the month of July. Our Center lost no time in addressing the financial and operational challenges put to us as a result of a public hearing conducted by the Government Revitalization Unit on November 11, 2009.

As a national center promoting and supporting a gender equality agenda from a learning and educational perspective focusing on four functions (training, exchange, research, and the collection and dissemination of information), we are committed to enhancing our unique feature of combining these functions while lending importance to partnering and collaborating with other concerned persons and organizations.

We have recently expanded partnerships and collaboration with universities. Besides our formal agreements with the Kagawa Education Institute of Nutrition and the Japan Women's College of Physical Education we are developing deeper partnerships and collaboration in new areas of mutual concern. Active cooperation is being developed through projects at our Women's Archives Center, where in addition to the routine exhibitions of historical materials kept at the center we are currently running an exhibition on "Women who Met the Challenges," focusing on pioneers who have established women's universities and scientists who were early recipients of science doctorates. Through asking related universities for materials for exhibition our collaboration is expanding. This year we plan to organize an exhibition to be titled "Beginnings of Vocational Education for Women: Women who Met the Challenges" which is giving us opportunities for further partnering and collaboration with more universities.

Career education is another focus of our expanding outreach and cooperation with related institutions. We currently offer a joint course with Saitama University. Further to the unique lesson provided by the University, the course benefits from the use of our Center's archival materials and gender equality statistics as a teaching resource. It also incorporates opportunities for working in group settings and in residential programs aiming at human relationship building.

Beginning in September we are launching another project for providing career education in collaboration with the Association of Private Junior Colleges in Saitama.

Not only working closely with universities, we are also organizing a Japan-U.S. Symposium on "Connections – Bringing Together the Next Generation of Women Leaders in Science, Technology, Engineering and Mathematics" in partnership with the U.S. National Science Foundation (July 5 to 7). This addresses new issues with an international scope.

NWEC as a national fulcrum of activities on behalf of women is engaged in steadily expanding and enhancing our effectiveness at the Center and through wider partnerships and deeper collaboration with other institutions.

RECENT NWEC ACTIVITIES

Training Seminar for Leaders of Child Raising and Family Life Support

A Training Seminar for Leaders of Child Raising and Family Life Support was conducted as a residential program on Friday, May 21 and Saturday, May 22, 2010. It was attended by 132 individuals from throughout Japan.

The importance of parents and families being supported by society as a whole and securing opportunities for "parents to develop as parents" have become major challenges in terms of how we should support child raising and family education.

The theme for this year's seminar was "Establishing an environment conducive to child raising being supported by society as a whole – the role of the family and the role of support providers." Discussion on support measures was augmented by a lecture by Professor Toshiyuki Shiomi, President of Shiraume Gakuen University; case studies of support for child raising by community groups and society as a whole, including men; and discussions in workshops. At the plenary session, workshop lecturers engaged in a panel discussion and shared the content of each workshop.



Scene from the plenary session

The seminar provided an invaluable opportunity for individuals in various positions, including officials in charge of support for child raising and family education, leaders of child raising supporters and networks, corporate officials in charge of child raising support and social contribution activities, and staff of women's facilities and social education facilities, to gather together, exchange information and deepen exchange.

Training Course to Promote Gender Equality for Leaders of Women's Facilities, Local Governments, Groups and Organizations

A Training Course to Promote Gender Equality for Leaders of Women's Facilities, Local Governments, Groups and Organizations was held at NWECC from Wednesday, June 9 through Friday, June 11, 2010. (The Course for Managerial Staff at Women's Facilities was co-hosted by the National Council of Women's Centers.) Attended by 143 participants from throughout Japan, specialized and practical training was conducted to facilitate acquisition of the knowledge, management skills and networking competency required of leaders who proactively promote gender equality in their communities.



Through a number of lectures and workshops, the current status of gender equality and challenges therein were clarified, and participants learned about strengthening the foundation of their organizations and measures being taken towards the 3rd Basic Plan for Gender Equality. Given that the roles of women's facilities, and local governments and civic organizations have been included in an interim draft of the 3rd Basic Plan for Gender Equality, lively exchanges of opinion on the direction of their respective programs and activities ensued.

Comments such as "I found clues to resolving challenges facing us today" and "I made more acquaintances and expanded my network for implementing things in my community" were received from participants.

Training Course to Promote Gender Equality at Universities and Research Institutes

A Training Course to Promote Gender Equality at Universities and Research Institutes was held as a residential program at NWECC on Thursday, June 24 and Friday, June 25, 2010. It was attended by 70 participants from throughout Japan.

Held for the first time this year, this course strives to facilitate acquisition of the knowledge, management skills and networking competencies required of managerial staff in the gender equality offices of universities and public research institutes towards the formation of a gender-equal society.

Participants listened to lectures regarding perspectives on promoting gender equality and an analysis of gender equality issues in universities and research institutes, and grasped and shared views on the current status thereof

and issues therein. They also learned basic knowledge through lectures on measures for women researchers in the EU, measures to counter sexual harassment in universities and achieving a work-life balance.



From the standpoint of universities comprising a type of small-to-medium-sized company, they also listened to examples of forward-thinking best practice research in the form of a case study of a company with a research institute and that of a small-scale business.

Participants were split into three working groups for workshops entitled “Facilitating the penetration of gender-equal perspectives on campus”, “Support for researchers’ work-life balance” and “Life planning support for women in medical professions.”

Comments such as “I learned that gender equality is regarded a strategy for universities, and as such, that firm resolve by top management and participation by all stakeholders is necessary” “I liked the fact that each session was concise and focused” and “I was able to interact with and exchange information with a variety of people” were received from participants.

Japan-U.S. Symposium: Connections - Bringing Together the Next Generation of Women Leaders in Science, Technology, Engineering and Mathematics

- Date Monday, July 5 ~ Wednesday, July 7, 2010 (2 nights, 3 days)
- Organizers National Women’s Education Center; U.S. National Science Foundation
- Co-sponsors The Japan Society for the Promotion of Science; The Japan Science and Technology Agency
- Venue National Women’s Education Center



- Main Program
 - Mon., July 5 Pre-meeting “Workshop on Connections - Bringing Together the Next Generation of Women Leaders in Science, Technology, Engineering and Mathematics”
Language: Japanese
 - Tue., July 6 Symposium (Keynote Speeches; Panel Discussion; Workshop 1)
Language: English
 - Keynote Speech (1)
“The Changing Picture for Women in Science and Higher Education Careers”

Dr. M.R.C Greenwood (President, University of Hawaii Systems)

• Keynote Speech (2)

“Accessibility: Bringing Changes to the World”

Dr. Chieko Asakawa (IBM Fellow, Japan IBM)

• Panel Discussion “Successfully Growing Female Leaders in Science and Engineering”

Moderator: Dr. Mitiko Go (Executive Director, Research Organization of Information and Systems; Ex-President, Ochanomizu University)

Panelists: Dr. Chieko Asakawa (IBM Fellow, Japan IBM)

Dr. Yuichiro Anzai (Ex-President of Keio University)

Dr. Sachiyo Suita (Executive Vice President, Kyushu University;
Ex-Director, Kyushu University Hospital;
Professor Emeritus, Kyushu University)

Dr. M.R.C. Greenwood (President, University of Hawaii Systems)

Dr. Shirley Dyke (Professor of Mechanical and Civil Engineering,
School of Mechanical Engineering,
College of Engineering, Purdue University)

Dr. Mary Clutter (Assistant Director for Biological Sciences- retired
National Science Foundation)

• Workshop 1

“Building Connections to Advance Future Directions of Science and Engineering”

Wed., July 7 Symposium (Workshop 2; Workshop 3; Wrap Up)

Language: English

• Workshop 2 “Topic Specific Sessions (Environment, Disaster Response, Etc)”

• Workshop 3 “Including Success Stories and Challenges to International Collaboration”

Gender equality in the field of research and empowerment of women scientists in particular, is an issue common to both Japan and the U.S. Held around the theme “Connections,” the symposium attracted the participation of 30 up-and-coming Japanese and American women scientists who considered ways of fostering leadership and other effective measures for promoting gender equality, and exchanged opinions on the creation of sciences and technologies opened up by information technology and the fusion of fields with a view to promoting international joint research among women scientists.

On the first day of the symposium, participants conducted poster sessions during which they also introduced



themselves. In the keynote speeches, speakers touched on their own experiences as they talked about issues such as scientists' career paths and innovation. In the panel discussion, the moderator and six panelists discussed the empowerment of women scientists, and participants contributed constructive questions and comments.

In the workshops that followed, participants split into groups in accordance with their own research fields or themes of interest and engaged in discussion, thereby identifying potential partners for joint research and building networks between Japan and the U.S.

The conclusion reached during the Wrap Up session on the final day was "This 'Connection' is extremely important for women scientists' empowerment and there is a need to develop it further." After the symposium ended, NWECC put together a mailing list of participants which is being used for reports published by NWECC and for liaison among scientists.

RESEARCH OF NWECC

Publication of the report "2009 International Forum for Women's Empowerment"

A report summarizing abstracts from the International Forum for Women's Empowerment held on October 31, 2009 and the outcome of the Empowerment Seminar for Women Leaders in the Asia Pacific Region has been published.

Based on the outcome of research on trafficking in persons undertaken by NWECC hereto and the Seminar on Support for Victims of Spousal Violence, which was commissioned by the Cabinet Office, the 2009 International Forum for Women's Empowerment was held under the theme "Eradication of Violence Against Women"

Part I of the report includes the unabridged keynote speech "Ending Violence Against Women – Lessons from the Philippine Experiences" presented by Dr. Sylvia Estrada-Claudio, Director of the University of the Philippines Center for Women's Studies. Part II comprises analysis of the current situation in terms of violence against women in the participants' countries and recommended policies for its eradication derived by specialists and participants (11 people from 8 countries) on the Empowerment Seminar for Women Leaders in the Asia Pacific Region held at NWECC prior to the International Forum.

This report can be downloaded from NWECC's website.

<http://www.nwec.jp/en/publish/page05.html>



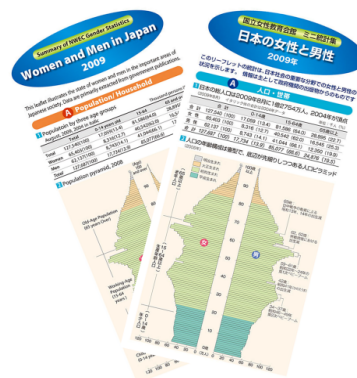
Publication of “Summary of NWEC Gender Statistics: Women and Men in Japan 2009”

NWEC has compiled a leaflet entitled “Summary of NWEC Gender Statistics: Women and Men in Japan 2009” illustrating the state of women and men in seven important areas of Japanese society: (A) Population/Households; (B) Education; (C) Time Use; (D) Labor and Income; (E) Health, Safety and Social Security; (F) Decision Making; and (G) Status Index.

Sample Content

Education : The number and ratio of women majoring in the natural sciences at university is low.

Time Use : Compared to EU nations, the amount of time Japanese men spend engaged in housework and child care and nursing is extremely short



Average length of service

Year	Total	30-34 years old	35-39 years old
2008	8.8	11.1	6.7
2009	8.5	11.8	7.3

Monthly scheduled earnings and earnings gap (without overtime)

Year	1980	1990	2000	2007
Female	123.2	181.2	255.1	241.7
Male	221.7	328.2	510.3	512.4

Household income by quartile group, 2008

Income	504,220	294,230	187,210	89,480
Wages & salaries	418,229	246,230	178,230	90,480

Health, Safety and Social Security

Mortality rate by major causes (per 100 thousand persons)

Year	Total	Women	Men
2008	12.2	11.1	13.3
2009	11.9	10.8	13.0

Number of child abuse cases

Year	Total	Women	Men
2008	16,218	531	14,787
2009	15,206	709	14,497

Number of people requiring long-term care

Year	Total	Women	Men
2008	1,101	17,275	20,862
2009	1,101	17,275	20,862

Decision Making

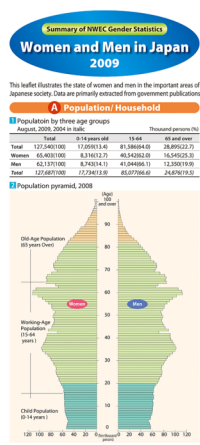
Share of women in Diet members

Year	Total	Women	Men
2008	1,101	17,275	20,862
2009	1,101	17,275	20,862

Status Index

Global Gender Gap Index World Economic Forum, 2008
Japan is ranked 10th among 130 countries.

Gender Empowerment Measure UNDP, 2009
Japan is ranked 5th among 130 countries.



Labor and Income : Although the earnings gap between men and women has shrunk marginally, women’s earnings are 65% of that of men.

We hope this leaflet will be used to foster understanding of the current situation based on data and advance the creation of a gender-equal society.

This leaflet is also available in Japanese and can be downloaded from the NWEC website.

<http://www.nwec.jp/jp/program/research/page03.html>

Research on Trafficking in Persons

NWEC regards trafficking in persons in the Asia-Pacific region where victims are often women to be a global gender issue, and has been conducting research on this theme since 2004. To date, NWEC has conducted hearings of women victims who have returned to their own countries as well as related organizations and institutions in Japan and overseas. NWEC also conducted basic surveys on adults’ sexual attitude and behavior in Japan. Based on these results, we created a set of TIP awareness raising panels (Photo A) and endeavored to raise awareness about trafficking in persons among civic groups and the public by lending these panels to gender equality-related events held at women’s facilities nationwide.

We have also used leaflets (Photo B) to provide gender equality advisors and counselors with information pertaining to trafficking in persons and conducted training seminars, etc. (Photo C).

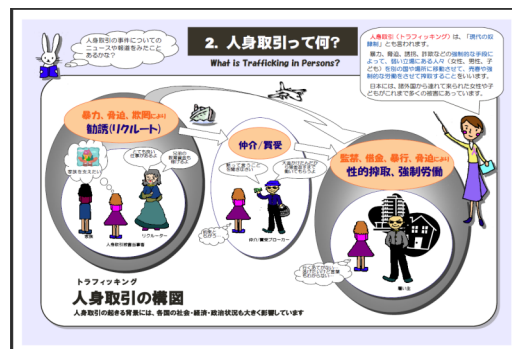


Photo A (TIP Awareness Raising Panel)

We addressed the issue of trafficking in persons as the theme of our annual Empowerment Seminar for Women Leaders in the Asia-Pacific Region in 2007 and at our International Forum in 2008. These events gathered concerned individuals from Japan and overseas and provided opportunities for learning about the issue, creating mutual understanding and deepening of relationships among various stakeholders.



Photo B (Leaflet)

In 2009, we conducted a training seminar under commission from JICA to strengthen the liaison functions and activities of Multi-Disciplinary Teams (MDTs) comprising concerned individuals involved in protection measures for victims of trafficking in persons in Thailand.



Photo C (Workshop)

Japan published its 2nd Action Plan of Measures to Combat Trafficking in Persons in December 2009. Based on this action plan, NWECC will continue to address this issue in terms of life long learning and education in the community level.

TOPICS

Conclusion of a Memorandum of Understanding on Exchange and Cooperation with the Ministry of Women’s Affairs, Kingdom of Cambodia

NWECC concluded a Memorandum of Understanding on Exchange and Cooperation (MOU) with the Ministry of Women’s Affairs, Kingdom of Cambodia on Tuesday, April 6, 2010.



H.E. Dr. Ing Kantha Phavi and President Kanda exchanging copies of the MOU.

H.E. Dr. Ing Kantha Phavi, Minister of Women’s Affairs, and her husband, visiting Japan at the invitation of the Saitama-Cambodia Friendship Association, attended the signing ceremony in a conference room at NWECC. Following an address by President Kanda outlining cooperation undertaken by the two institutions in the form of research, training and personnel exchange that had preceded conclusion of the MOU, Minister Phavi expressed her hope that the agreement would facilitate further development of such cooperative relations, and the MOU was signed.

Following the ceremony, the distinguished guests toured NWEC's Information Center for Women's Education and Women's Archives Center, and attended a dinner party hosted by the President where they discussed the content of future cooperation in a genial atmosphere.

Both institutions will take advantage of the conclusion of this MOU to further deepen research, information exchange and other program and personnel exchange concerning gender equality and women's education, and to cooperate in the hosting of international conferences and seminars.

This is the fifth MOU NWEC has concluded with institutions overseas following those with the Korean Institute for Gender Equality Promotion and Education, the Korean Women's Development Institute, the University of the Philippines and Yanbian University, China.

President Kanda awarded the Prime Minister's Award for Distinguished Service toward the Creation of a Gender-Equal Society

NWEC's president, Michiko Kanda, was awarded the FY2010 Prime Minister's Award for Distinguished Service toward the Creation of a Gender-Equal Society at the office of the Prime Minister on Tuesday, June 22.

Presented by the Cabinet Office, this award strives to contribute toward the formation of a rich and vigorous gender-equal society by rewarding people who have succeeded in building momentum towards the creation of a gender-equal society over a number of years and contributed to the promotion of gender quality by engaging in practical activities in various fields.



[President Kanda receiving her commendation](#)

This award was bestowed upon Ms. Kanda in recognition of her contributions to gender quality by deepening research in women's issues and playing an active role in building effective and practical theory in women's studies as the president of Toyo University and the first female president of a comprehensive university; tirelessly pursuing activities to advance women's empowerment and women's education such as study programs to resolve women's issues, training programs for concerned individuals, specialized research, and information collection and dissemination as the president of the National Women's Education Center; as well as participating in the formulation of the government's Second Basic Plan for Gender Equality as a member of the Council for Gender Equality, of the Cabinet Office.



[President Kanda with Koichiro Genba, Minister of State for Gender Equality and Social Affairs, at the social gathering](#)

INFORMATION FROM NVEC

The Women's Archives Center's "Exhibition from the Center's Collection" and "Special Exhibition 2010"

Exhibition from the Center's Collection

The following materials were exhibited in the Women's Archives Center's Exhibition Room on the first floor of our Main Building from Wednesday, April 28 through Sunday, August 8, 2010.

- The Shio Hamako and Shunju-kai Collection

Materials collected by Hamako Shio, an expert in women's education policy, who was in charge of women's education of the Ministry of Education over a period of approximately 20 years from 1952; and the Shunju-kai, a group of individuals in charge of women's education. The exhibition features materials from meetings of individuals in charge of women's education at the time and guidebooks, etc. for individuals holding classes for women.

- Materials related to the Fourth World Conference on Women (The Beijing Conference)

To commemorate the 15th anniversary of the Beijing Conference, conference posters and photo albums depicting scenes from the conference were exhibited.

In conjunction with this, materials distributed by delegations to the 54th UN Commission on the Status of Women held in New York in March this year were exhibited in the lobby in front of the Information Center for Women's Education on the 2nd floor of our Main Building.



The Exhibition Room

Special Exhibition 2010

An exhibition entitled "The Beginnings of Vocational Education for Women: Women who Met Challenges" is being held from Thursday, August 12 through Sunday, November 14, 2010.

The exhibition focuses on Haruko Hatoyama (Kyoritsu Women's University), Tamako Yokoi and Shizu Sato (Joshi University of Art and Design), Taka Kaetsu (Kaetsu University) and Ishiko Shimada (Bunkyo Gakuin University), who founded institutions of higher education for women during the Meiji and Taisho years in the hope of promoting women's social independence. With the cooperation of these universities, the exhibition introduces the spirit of their founding and social conditions prevalent at that time.

FY2010 Programs by NVEC

1. Improvement of the capabilities of core leaders for women's education

Program	Research Collaborators	Goals & Content
(1) Research on Women's Facilities as Hubs for Promoting Gender Equality	Researchers in the fields of women's education and lifelong learning; individuals involved in women's facilities; leader of women's organizations, etc.	To further promote gender equality by conducting research that contributes to enhancement and strengthening of the functions of women's facilities as hubs for promoting gender equality by grasping and analyzing the status of women's facilities. This fiscal year, research focusing on women's facilities' networks will be undertaken to contribute to the building of effective networks

2. Development and popularization of learning programs related to pressing issues concerning gender equality, women's education and family education

Program	Research Collaborators	Goals & Content	
(2) Research on Women's Problem Solving-based Community Activities Conducive to Economic Independence	Researchers in the field of women's education; administrative officers; individuals involved in women's facilities, groups and organizations; etc.	Conduct research that focuses on activities designed to resolve problems in the community that are conducive to economic independence such as business ventures and social businesses (NPOs) and contribute toward local revitalization and the economic independence of women who will support Japan's new system of public-private governance.	
(3) Research on Programs to Support Child Raising by the Community from a Gender-equal Perspective	Researchers in the fields of women's education, family education and child raising support; administrative officers; individuals involved in groups and organizations; etc.	Conduct research on measures to strengthen networks and collaboration among child raising support organizations, women's groups and organizations, etc. with a view to promoting gender equality in the community through community support for child raising.	
Program	Targets & Numbers	Date	Content
(4) Training Program on the Promotion of Support for Women's Career Building	Staff at women's facilities, social education facilities, etc.; members of organizations, groups, NPOs, etc.; faculty responsible for career education at universities and other tertiary education facilities; etc. 80 persons	July 14 (Wed.) ~ 16 (Fri.), 2010 2 nights 3 days	Conduct specialized and practical training that will contribute to career development support with a long-term perspective by introducing the concept of linking peoples' activities to society based on a recognition of diverse careers.
(5) Training Course for Counselors at Women's Facilities	Individuals involved in counseling services for women's troubles and concerns at women's facilities and private counseling offices 120 persons	October 7 (Thurs.) ~ 9 (Sat.), 2010 2 nights 3 days	Conduct specialized and practical training to improve the quality of counseling services and facilitate the handling of women's increasingly complex and diverse troubles and concerns, with the aim of supporting women's empowerment.

Program	Targets & Numbers	Date	Content
(6) Seminar for Individuals Supporting Female Students' Job Hunting Activities	Faculty, etc. responsible for supporting job hunting at universities, etc. 80 persons	March 3 (Thurs.) ~ 4 (Fri.), 2011 1 night 2 days	Conduct specialized and practical training with a view to strengthening support functions for female students, and continue to promote women's career development despite the severe employment situation.
(7) Forum on Exchange in Research and Practices Promoting Gender Equality (NWECE Forum)	Leaders of women's groups and organizations; researchers, etc.; administrative officers in charge of gender equality, women's education, family education, etc.; staff of women's facilities 1,000 persons	August 27 (Fri.) ~ 29 (Sun.), 2010 2 nights 3 days	Support the building of networks to promote mutual exchange through practice and research and create opportunities to discover, secure and train new human resources with a view to contributing toward resolving pressing issues such as support for women's diverse career building, child raising support and the work-life balance.
(8) Gender Equality Exchange Week (Ranzan Exchange Week)	Organizations and individuals using NWECE during this period. 100 persons	November 8 (Mon.) ~ 12 (Fri.), 2010 5 days	Provide opportunities for mutual interaction and information exchange among participants from women's organizations, etc., and support the building of networks between organizations.
(9) Meeting on Exchange and Learning	Leaders of women's groups and organizations who have participated in training and/or exchange programs at NWECE and engage in building local networks; administrative officers in charge of gender equality and women's issues; individuals involved in women's facilities; etc. 150 persons	March 11 (Fri.) ~ 13 (Sun.), 2011 2 nights 3 days	To promote gender equality in local communities, hold a Meeting on Exchange and Learning as follow-up for individuals who have participated in training and/or exchange programs at NWECE, and engage in opinion exchange with a view to fostering cooperation and collaboration with related institutions such as women's facilities and women's groups and organizations and advancing the building of networks.
(10) Summer School for High and Junior High School Girls 2010 ~ Scientists and Engineers of the Future ~ (Commissioned by Japan Science and Technology Agency)	3rd year junior high school girls; senior high school girls; and parents and teachers with an interest in science and technology Students 100 persons Parents & Teachers 50 persons	August 12 (Thurs.) ~ 14 (Sat.), 2010 2 nights 3 days	Hold a residential hands-on science program with the aim of enabling junior and senior high school girls to discover new possibilities for themselves in the fields of science and technology through dialogue and interaction with scientists, engineers and students at science and engineering universities. Hold a program for parents and teachers in conjunction with this.

Program	Targets & Numbers	Date	Content
(11) Seminar on Support for Victims of Spousal Violence (Commissioned by the Cabinet Office)	<p>【Basic Seminar】 Individuals with less than 3 years' experience as a counselor at spousal violence counseling and support centers, gender equality centers, etc. nationwide 80 persons on each occasion</p> <p>【Applied Seminar】 Individuals with 3 or more years' experience as a counselor at spousal violence counseling and support centers, gender equality centers, etc. nationwide 50 persons</p> <p>【Management Seminar】 Supervisors of spousal violence counseling services at spousal violence counseling and support centers, gender equality centers, etc. nationwide 50 persons</p>	<p>Regional Seminars 2010: Osaka: July 23 (Fri.) Tokyo: July 26 (Mon.) Miyagi: July 29 (Thurs.) Fukuoka: August 4 (Wed.) 1 day</p> <p>October 7 (Thurs.) ~ 8 (Fri.), 2010 1 night 2 days</p> <p>November 1 (Mon.) ~ 2 (Tues.), 2010 1 night 2 days</p>	<p>The following seminars will be held for counselors, etc., at local public entities nationwide that provide spousal violence counseling services with the aim of ensuring smooth and timely counseling procedures, etc., and enhancing the quality of their services.</p> <p>【Basic Seminar】 A basic practical seminar to facilitate the acquisition of basic knowledge and skills required of counselors.</p> <p>【Applied Seminar】 A specialized practical seminar to facilitate the acquisition of advanced knowledge and counseling skills.</p> <p>【Management Seminar】 A seminar designed to enhance the knowledge and skills required of managers.</p>

3. Provision of information, materials and research findings relating to gender equality, women's education and family education

Program	Contents	
(12) Maintenance and Development of the Women's Information Portal "Winet"	Improve dissemination of information by updating the contents of portal sites for women and families and the various databases constructed and provided by the Center that contribute to the formation of a gender-equal society. Also, revamp the design with a view to making it a more user-friendly portal site.	
Program	Research Collaborators	Goals & Content
(13) Research on the Use of Statistics in Promotion of Gender Equality	Researchers and experts in the fields of women's studies, gender research and statistics	Based on the Data Book of Gender Equality Statistics 2009 compiled in FY2008, study ways of using statistical data on women and men to contribute to formation of a gender-equal society. This fiscal year, newsletter will be compiled and networks among concerned individuals will be encouraged.
Program	Contents	
(14) Construction of Women's Archives	Collect and organize materials related to women and make the Women's Digital Archive System and the Women's Archive Center partially accessible to the public. Conduct training for staff engaged in work related to the women's archives.	

Program	Contents
(15) Collecting, Organizing and Providing Information and Materials on Women and Family	Collect, organize and provide information and materials pertinent to gender equality, women and family.
(16) Reference Service; Photocopying Service; and Lending Service	Provide information to visitors and in response to mail, email and telephone inquiries. Provide copying services for materials owned by the Information Center for Women's Education, and lending services through libraries, women's centers, etc. Launch a lending service for individuals visiting the Center on a trial basis.
(17) Exhibitions of Books and other Materials on Women and Family	Deepen understanding in the fields of women and family by displaying materials owned by the Center in exhibitions organized around themes and special exhibitions.

4. Promotion of international contributions and collaboration related to gender equality and women's education

Program	Targets & Numbers	Date	Content
(18) Empowerment Seminar for Women Leaders in the Asia Pacific Region	Administrative officers and NGO leaders (incl. Japan) Approx. 12 persons	September 30 (Thurs.) ~ October 9 (Sat.), 2010 10 days	Conduct a practical participatory seminar on women's capacity building and personnel training for administrative officers responsible for women's policy and education and NGO leaders in a position to disseminate and popularize the results of training in developing countries.
(19) International Forum for Women's Empowerment	Administrative officers in charge of gender equality, women's education and family education; staff of women's facilities; leaders of women's groups and organizations; researchers; individuals involved in international exchange and development assistance; business people. Approx. 80 persons	October 8 (Fri.) ~ 9 (Sat.), 2010 1 night 2 days	Invite overseas specialists and analyze issues pertinent to the Asian Pacific Region around themes of a global scale such as women's human rights and women's capacity building and training; deepen exchange with researchers, administrative officers and leaders of women's organizations, etc. overseas; and promote the building of networks.
Program	Research Collaborators	Goals & Content	
(20) Research on education, awareness-raising and liaison measures for the prevention of trafficking in persons	Researchers and practitioners specializing in fields such as women's education, social education, jurisprudence, information science, social policy, international cooperation; NGOs, etc.	To develop learning programs that utilize the activities of women's facilities and organizations to focus on international and multifaceted aspects of trafficking in persons; to revise the panels and associated leaflets to reflect the content of the 2009 Action Plan on Countermeasures to Trafficking in Persons, and to compile reference materials that will contribute to education and awareness-raising on trafficking in persons.	

5. Learning Support Programs & Publications

Program	Content
(21) Learning Support Program	Responds to inquiries about programs planned and implemented by groups and organizations that use the National Women's Education Center. Expand the services provided to users and usage by providing and implementing NWEC programs related to gender equality
(22) Social Education Internship Program	Aims to enable students taking practical courses in social education at universities to learn the current status of women's education and the roles played by women's facilities through experiential learning in the form of assistant work at sponsored programs. Period: One week including the duration of the sponsored program Acceptance: a few individuals
(23) PR & Information Dissemination	NWEC Newsletter Introduces NWEC activities and updates on the current status of women in Japan to readers overseas in English. Main distribution: Overseas government institutions responsible for women's issues; women's centers and organizations; and international organizations, etc. Information dissemination: Biannual (October 2010 & March 2011) NWEC News Provides information on NWEC activities; researches and the ensuing reports and preparation of material; fundamental knowledge about words; users' opinions; and articles related to the Center. Distribution: Government institutions; women's facilities; women's organizations; universities; mass media; general, etc. Publication: Biannual (July 2010 & January 2011)
(24) NWEC Action Research	Publish NWEC Action Research featuring reports on research pertaining to the promotion of women's empowerment and gender equality and the practical activities of women's facilities and organizations. Publication: Annual (January 2011)

EDITOR'S NOTE

The National Women's Education Center (NWEC) -the Independent Administrative Institution strives towards the formation of a gender-equal society. Cooperating with organizations and institutions involved in women's education in Japan and other countries, NWEC functions as a national center for women's education to promote training opportunities for leaders in women's education and others in the field; opportunities for exchange between groups, both women's groups and family education support groups; specialized research into women's education and family education; and the collection, compilation and dissemination of information on women and the family. The NWEC Newsletter is published twice a year to introduce our activities.

NWEC Newsletter has been published since 1984. It includes information on various activities undertaken by the National Women's Education Center as well as women in Japan. The paper-based newsletter was renewed as a digital-based news source to facilitate more efficient and timely dissemination of the information.

We invite you, hereafter, to access information real time from the Center's Home Page as well as read our latest newsletter from the following pages.

○NWEC Home Page(English) <http://www.nwec.jp/en/>

○NWEC Newsletter Top Page <http://www.nwec.jp/en/publish/#head1>

★ In the singing of insects, I feel the coming of Autumn. Thank you for reading NWEC Newsletter.

National Women's Education Center (NWEC)

Address: 728 Sugaya, Ranzan-machi, Hiki-gun, Saitama-ken 355-0292, Japan

Tel: +81-493-62-6714 Fax: +81-493-62-9034 E-mail:webmaster@nwec.jp

Published in Japan ISSN 1882-0697